

Anseong Campus

Jungang-ro 327, Anseong-si, Gyeonggi-do, 17579, Republic of Korea
Tel. +82-31-670-5114 Fax. +82-31-673-2704, 2712

Pyeongtaek Campus

Samnam-ro 283, Pyeongtaek-si, Gyeonggi-do, 17738, Republic of Korea
Tel. +82-31-610-4600 Fax. +82-31-610-4930



www.hknu.ac.kr

The Only National University in Gyeonggi-do,

Open Campus!

Networking Campus!

Evolving-to-future Campus!



Paving the way to the future The Only National University in Gyeonggi-do

Open University that practices
openness and participation

University with community and students

University that opens up the future for students

This is the vision of Hankyong National University

Participation, Openness, Cooperation
and Coexistence

We will raise the pride of being the
Only National University in Gyeonggi-do



Contents

- 03 President's Message
- 04 Differentiation of HKNU
- 05 Vision of HKNU
- 06 Characterization of HKNU
- 07 Undergraduate/Graduate Introduction
- 08 History of HKNU
- 10 LEARNING
- 14 COOPERATING
- 16 INCLUSION
- 18 SHARING
- 20 CREATING
- 21 ACHIEVING
- 22 Campus map



Open Campus, Networking Campus, Evolving-to-future Campus Welcome to Hankyong National University



We are proud to announce the merger of Hankyong University, which was founded in 1939 in Anseong, and Korea National University of Welfare, which was founded in 2002 in Pyeongtaek to form Hankyong National University. As the only state-run university in Gyeonggi-do, Hankyong National University will be refocusing its energies to cultivate future workers through research and education at its Anseong and Pyeongtaek campuses as well as at the Gyeonggi Eco-Friendly Agricultural Research Center in Suwon and affiliate farms. We will also continue the former Korea National University of Welfare's efforts in the area of special education to become a hub of research on higher education for people with disabilities, make progress in improving quality of life for people with disabilities, and carry out the Korean government's responsibility to protect the socially-vulnerable. By expanding the scope of education and research on agriculture, we will contribute to the advancement of smart agriculture and agricultural energy. From our location in the heart of the "K-semiconductor belt" of Icheon, Yongin, Anseong, Pyeongtaek, and Cheonan, we are doing our utmost to produce workers for Korea's new industries. The people and outcomes of our design major are further elevating Hankyong National University's status in the international community. Our graduate employment rate was 63.9% in 2021 and 67.9% in 2022, the highest among state universities,* which is an accomplishment that we will use as the basis for further growth. Through meticulous management, we will maximize the synergy of the merger to become a competitive national university. The process of combining two universities is a formidable one, but every effort will be made to ensure its smooth progression based on an attitude of openness and acceptance of others. The Hankyong National University family is grateful for your support and will be doing its best to become a reliable and competitive state-level university

* Based on the University Information Disclosure System's 2021 and 2022 figures for four-year state universities [not including specialized state universities (e.g. National University of Education, Mokpo National Maritime University, National Korea Maritime & Ocean University, Korea National Sport University)]

이원희

Wonhee Lee
President, Hankyong National University

Differentiation of HKNU



Special 01 | K-Semiconductor Customized Talent Development

At the center of the k-semiconductor belt are the Pyeong-taek and Anseong campuses of Hankyong National University. Universities and regions cooperate to establish a human and material system for fostering talent tailored to the semiconductor industry and growing local industries

Special 03 | Creating a ESG Future

We are continuously conducting research and education for low-carbon, green growth to find energy from plants that can replace fossil fuels, which are the main culprits of serious air pollution and greenhouse gases, and to develop livestock manure as an energy source

Special 02 | Leading Positive Change

In 2023, by being selected as a 'base university for supporting students with disabilities' by the Ministry of Education, we aim to contribute to the realization of an advanced welfare society as a control tower for higher education for students with disabilities. We provide convenience to students with disabilities through various education guarantee systems and universal design

Special 04 | Opening New Possibilities

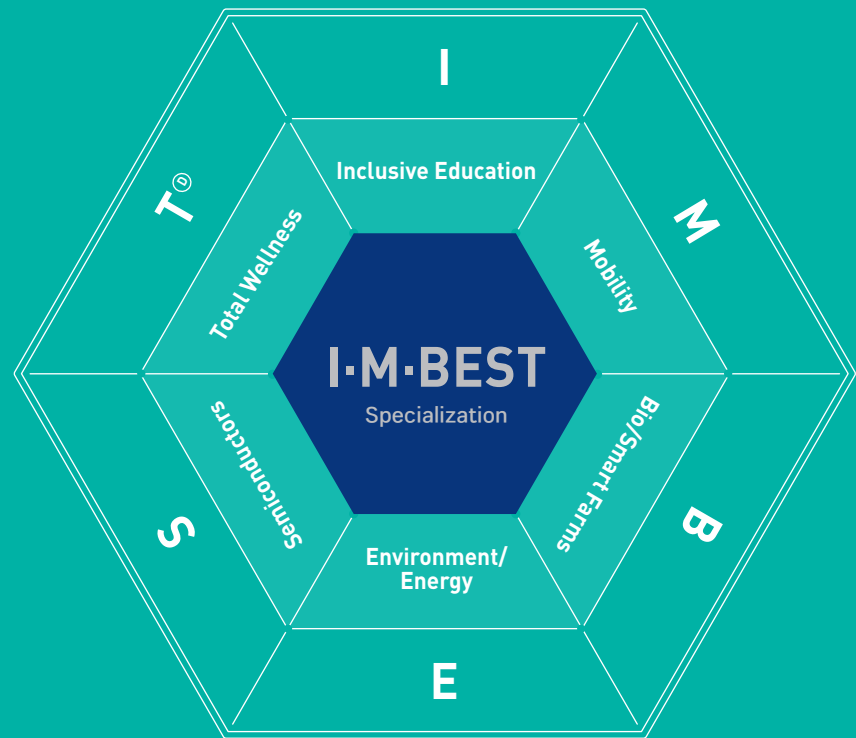
We are building a new agricultural platform for economic mass production with cluster formation and smart farms through packaged research such as raw material discovery, production management, and market analysis to vitalize high value-added biomaterial agriculture. Agriculture is at the center of healing and wellness

Vision of HKNU

| | | | | | | |
|-------------------------------|---|--|---|--|--|--|
| Slogan | Becoming ONE: Hankyong National University | | | | | |
| Vision | Forging a path toward the future as Gyeonggi-do's leading state university | | | | | |
| Goals | <div><div><div>Open Campus</div></div><div><div>Networking Campus</div></div><div><div>Evolving-to-future Campus</div></div></div> | | | | | |
| Strategies (4 "I"s) | Innovative Education Provide innovative education to cultivate creative and capable workers for future industries | Inclusive Assistance Strengthen support for students in each stage of life and skill development | IRU* Platform Establish an industry- academia -research platform that serves as a leader of local industries' innovative growth | Integrity with ESG University Develop HKNU as a representative of Gyeonggi-do's state universities through participation of the HKNU family | | |
| Strategic areas & initiatives | Education Innovate creativity/ convergence education (BRIGHT) Pursue edutech-based innovation of teaching and learning Revitalize glocal education and cooperation Cultivate workers with skill sets that match local needs | Student support Select/secure local manpower Fortify support for students' in different life stages Strengthen support for students' job-seeking efforts (post-graduation) Strengthen inclusive nature of education-related welfare | Research and industry-academia-research cooperation Revitalize convergence research for future needs Sophisticate industry-academia-research system Strengthen industry-academia cooperation for local industries Cultivate academic fields related to future industries/needs | University operation Expand social contributions as a national university Establish sustainable operational system Establish future-friendly academic system Establish future-oriented multi-campus | | |
| |  |  |  | | | |
| | Principles | Truth | Creation | Practice | | |
| | Objective | Contribute to the advancement of the country and humankind | | | | |
| Goals | Foster individuals who are enterprising and have strong communication skills | | | | | |
| The HKNU individual |  |  |  | | | |
| | A professional who is passionate about learning, creative, and able to engage in interdisciplinary activities | A communicator who knows how to embrace diversity and interact with others with empathy | An intellectual who is not afraid of challenges and has self-assessment skills | | | |
| Core capabilities (BRIGHT) |  <div>B Blending</div> |  <div>R Research</div> |  <div>I Interaction</div> |  <div>G Globalization</div> |  <div>H Holistic</div> |  <div>T Trailblazing</div> |

*IRU: Industry with Region and University platform

Characterization of HKNU



| Area of Specialization | | Keyword | Definition | Area of Specialization (in relation to government policy) |
|------------------------|---------------------|--|---|---|
| I | Inclusive Education | Inclusive Education (for disabled and non-disabled) | Educational research and personnel development in an environment that treats students equally regardless of disability | Fortification of special higher-level education |
| M | Mobility | Mobility (Vehicle) | Research and personnel development on vehicles fueled by alternative energy sources (self-driving, zero-carbon) | Advanced cars (electric/self-driving) |
| B | Bio/Smart Farms | Life | Research and personnel development on use of biotech/agri-life resources | Smart farms |
| E | Environment/Energy | Zero Carbon | Research and personnel development on environmental improvement and new & renewable energy to realize zero-carbon society | <ul style="list-style-type: none">• New energy industry (new and renewable energy)• Carbon neutrality• Smart cities |
| S | Semiconductors | System Semiconductors | Research and personnel development on memory semiconductors and system/AI semiconductors | Next-generation (intelligent) semiconductors |
| T [Ⓢ] | Total Wellness | T Wellness | Physical, Mental, and Social Health | <ul style="list-style-type: none">• Individually-tailored healthcare• Bio-health |
| | | Ⓢ Design | Experienced Value | <ul style="list-style-type: none">• Public web/app• Premium materials |

Beyond your Major



Undergraduate Majors

Nurturing prepared, creative talents



Anseong Campus

School of Applied Humanities & Public Service
School of Law & Business Administration
School of Wellness Industry & Convergence
School of Applied Science in Natural Resources & Environment
School of Animal Life Convergence Science
School of Biotechnology
School of Civil & Environmental Engineering
School of Social Safety System Engineering
School of Food Biotechnology & Chemical Engineering
School of Computer Engineering & Applied Mathematics
School of ICT, Robotics & Mechanical Engineering
School of Electronic & Electrical Engineering

Pyeongtaek Campus

School of Computer & Applied Mathematics
School of Architecture & Design Convergence
School of Rehabilitative Welfare
School of AI & Semiconductor Convergence
School of Creative Arts
School of Integrated Social Sciences

Anseong Campus

School of Global Workforce Development
School of Future Convergence (night program)



Graduate Introduction

Raising the value of people and learning



General Graduate School

Master's Course

Animal Life Convergence Science, Architecture & Architectural Engineering, Business Administration, Computer and Applied Mathematics, Electrical &Electronic Engineering, ICT Robotics & Mechanical Engineering, Language & Literature, Design, Human Ecology, Biotechnology, Law, Plant Science & Landscape Architecture, Civil & Environmental Engineering, Food Biotechnology & Chemical Engineering, Social Safety System Engineerin, Public Administration

PhD Course

Animal Life Convergence Science, Biotechnology, Law, Human Ecology, Chemical Engineering, Convergence System Engineering, ICT & Robotics Engineering, Plant Science & Landscape Architecture, Business Administration, Civil Safety Environmental Engineering, Electrical &Electronic Engineering

Specialized graduate school

Graduate School of Industry

Master's Course

Green Bio Industry, Children & Family Welfare, Industrial System Engineering, Plant Engineering, Sports Science

Graduate School of Public Policy

Master's Course

Educational Administration, Labor Welfare, Global Logistics, Legal Affairs

Graduate School of International Development and Cooperation

Master's Course

International Development & Cooperation, Global Management

Graduate School of Education

Taking human resources education one step farther, Anseong Campus

Constant Pursuing of Change
Cultivating Creative Convergence Talent
Vitalization of Glocal Education Cooperation

Birth and Growth 1939~2000

- 1939.4.15 Anseong Public Agricultural School opened
- 1965.4.15 Anseong High Agricultural College opened
- 1977.9.1 Status changed to national college
- 1979.1.1 Establishment of Anseong Agricultural Junior College authorized
- 1993.3.1 Anseong Industrial University opened
- 1999.3.1 Name changed to "Hankyong University"
- 1999.4.29 Selected by Ministry of Education as Excellent University for Education Reform
- 2000.9.29 Named by JoongAng Ilbo's National University Assessment as No. 1 in faculty category and "excellent" in employment rate and social assessment categories

Path of Change 2001~2019

- 2001.8.24 Designated as Excellent Industrial University by Ministry of Education and Human Resources Development
- 2005.2.25 Designated as Eco-Friendly Agricultural Product Certification Agency by National Agricultural Products Quality Management Service
- 2006.4.10 Designated as GAP certification agency by National Agricultural Products Quality Management Service
- 2006.4.27 Selected for second phase of BK21 project by Ministry of Education and Human Resources Development
- 2011.7.8 Selected for Marine Environmental Technology Development Project by Ministry of Land, Transport and Maritime Affairs
- 2012.3.1 Launched as general four-year university
- 2015.4.6 Selected as supervisory institution for Research Village Business project by Small and Medium Business Administration
- 2016.5 Selected as participant of Changnong Farm Share Project
- 2017.4.20 Selected as Best University by Ministry of Education's Evaluation of Operational Competency of National University Employees
- 2019.3.12 Selected for Gyeonggi-do Job Foundation's Employment Bridge Project
- 2019.5.28 Selected as implementing institution for empirical research on fine dust reduction

Beginning of Innovation 2020~

- 2020.6.16 Selected for Gyeonggi-do Convergence Technology Entrepreneurship Program for University Students
- 2020.10.29 Received participation award for Outstanding Examples of Government Innovation Contest (Education)
- 2020.11.27 Selected as Outstanding University in Assessment of Educational and Welfare Benefits for University Students with Disabilities
- 2021.2 Selected by Ministry of Employment & Labor as Outstanding University in 2020 Outcome Assessment of University Employment Center Programs
- 2021.5.6 Selected by Korea Employment Information Service as Outstanding University in 2020 Outcome Assessment of University Employment Center Programs
- 2021.9.1 Received participation award for Outstanding Examples of Government Innovation Contest (Education)
- 2021.9.3 Selected as recipient of general financial support by 2021 University Basic Capability Assessment
- 2022.4.25 Merger with Korea National University of Welfare approved
- 2022.12.31 Received Grand Prize for Outstanding Examples of Government Innovation Contest (Education)
- 2023.3.1 Hankyong National University opened

Forging a new future, Pyeongtaek Campus

An idea ahead of its time,
unique value for the future,
and a starting point for
a competitive leap forward



Birth and Growth 2002~2018

- 2002.4.18 Korea Rehabilitation & Welfare University opened
- 2011.12.8 Converted to three-year university
- 2012.9.1 Name changed to "Korea National University of Welfare"
- 2014.7.1 Selected as participant of Specialized College Cultivation Project
- 2016.11.1 Rehabilitation and Psychological Treatment Education Center opened (university-operated company)
- 2016.12.23 Selected as supervisory institution for Ministry of Education's National Assistance Program for Students with Disabilities
- 2017.4.27 Selected as implementing institution of startup training for people with disabilities
- 2018.11.21 Selected as Hub University for Ministry of Education's Career & Employment Support Program for Students with Disabilities (2019-2020)

Path of Change 2019~2020

- 2019.8.1 Accredited as specialized college (~December 31, 2023)
- 2020.5.1 Selected for Maker Space Establishment Project by Ministry of SMEs and Startups (~December 31, 2024)
- 2020.5.1 Selected for Stage 3 School Corporation Support Program by Ministry of Education (~February 28, 2024)



A new leap forward 2021~

- 2021.2.9 Selected as Outstanding University in Assessment of Educational and Welfare Benefits for University Students with Disabilities (Ministry of Education and Korea National Institute for Special Education)
- 2021.6.24 Designated as Outstanding Institution and received ministerial citation for National University Library Contest (Ministry of Education and Korea Education and Research Information Service)
- 2021.12.27 Received highest score and Grade A rating in Continuing Educational Institution Assessment and received ministerial citation from Ministry of Health and Welfare
- 2022.4.25 Merger with Hankyong National University approved
- 2023.3.1 Hankyong National University opened

LEARNING

Only Education for Myself

From University ranking to Major specialization
From Container education to Content education
With Flexible and Convergence
Education that Eliminates the Division of Majors,
Implement Human Resources Platform

17 Faculties 43 Majors

The Era of the 4th Industrial Revolution
Based on Innovation
Presenting New Paradigms

Nurturing Future Leaders
Actively Responding to Rapid
Environmental Changes
Flexible Bachelor System and
Convergence Education

Convergence Major Opening Status
Smart healthcare, AI smart farm,
AI big data, Public health care,
AI Semiconductor,
Smart Agrifood System



Library

Strong University for Employment

Employment Rate

1st place for 3 Consecutive Years

1st place for 3 Consecutive Years among
General National Universities
with 67.9% in 2022

※ Source: 2021 and 2022 university information disclosure standards for 4-year national universities (excluding special purpose national universities such as National University of Education, Mokpo National Maritime University, Korea Maritime and Ocean University, and Korea National Sport University)

Universities Participating in the Employment Bridge Project

Selected for 5 Consecutive Years

2020-2022 Ministry of Employment and Labor University Job Plus Center Project rated 'Excellent' for 3 Consecutive Years

Selected for 5 Consecutive Years as a Participating University in the Gyeonggi-do college student Employment Bridge Project

Field Practice

339 Cases

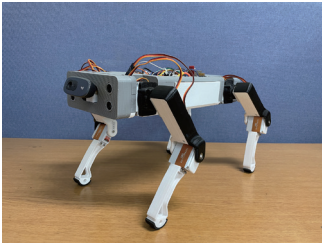
Seasonal Field Practice,
Semester-Based Field Practice,
Employment Bridge Business Field Practice Program,
339 Cases Conducted in the last 3 years

Student awards

Intelligent Creation Robot Contest, SEOUL TECH Intelligent Robot Contest, Embedded Software Contest, Capstone Design, National Defense Robot Contest, New York Type Directors Club, New York Art Directors Club, CQ New York Best Annual 2022, Starbucks Tumbler Drawing Contest, National University Students App Development K-Hackathon Contest, Organic Garden Contest, Korea Environmental Landscaping Contest, Korea City Forest Design Contest, College Student Smart E-Mobility Contest, Korean Architecture Culture Contest, Korea Housing Society Student Design Exhibition, Traditional Record Culture Utilization Contest, G -HOP Entrepreneurship Contest, etc
Awarded in multiple competitions



CQ New York Best Annual 2022
Designated as One of the Top 100 Designers



2022 Defense Minister's Cup Defense Robot Contest
Excellence Award - CVLab Intelligent Robot Team

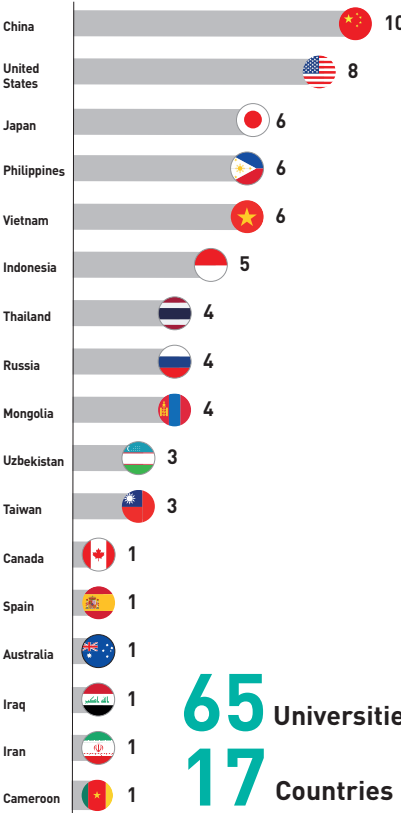
Nurturing Global Talent

Operation of Global Programs to Improve International Awareness and Vocabulary Ability

Promoting Active International Cooperation, such as Providing Opportunities for Overseas Study and Joint Academic Research based on Exchange agreements with Leading Universities and Institutions around the World

Overseas Dispatch Credit Exchange (exchange student, language semester system) (Tokyo University in Japan, NJCU in the U.S., UF University in the U.S., etc.), Overseas Training Programs (ASA in the U.S., WC in

Australia, BPSU in the Philippines, etc.), and Mentoring (tutoring) Programs for Foreign Students



65 Universities in 17 Countries

Roadmap for Career Employment Step-by-Step

| Classification | Career Exploration 1st year (Level 1) | Career Setting 2nd year (Step 2) | Competency Building 3rd year (Step 3) | Practical Employment 4th year (Step 4) | Apply after graduation |
|------------------------|--|--|--|---|--|
| | Adaptation to College life + Self-understanding | Job and job search + Basic ompetency Enhancement | Searching for corporate Information + Strengthening Job competencies | Reinforcement of Job search skills and Job search capabilities + Diversification of Career paths | Job search Support + Career Development Support |
| Major non-subjects | <ul style="list-style-type: none">• Career counseling• Self-understanding program- Career diagnosis test and Interpretation Counseling• Career Exploration Program- HK Career Camp• Special Lectures on Career and Employment- Special Lectures on Adapting to College life- Special Lectures Customized for Undergraduate (Major)• Listening Coffee shop (open counseling room)• Certificate (informatization) | <ul style="list-style-type: none">• Career counseling• Job Search Program- HK Career Camp• Special lectures on Career and Employment- Special Lectures on Job duties for current Employees- Special Lectures customized for Undergraduate (Major)• Mentoring for Senior Employers• Specialized program for Female college students• Business tours and small and medium-sized business visits• Career Employment Festival• Certificate (informatization) | <ul style="list-style-type: none">• Employment counseling• Reinforcement of Job competency Program- Job Fair- Job Camp- Special Lecture on Job• Special Lectures on Employment- Recruitment Trends and Employment Strategy- Special Lectures Tailored to Undergraduate (Major)• Recruitment information session• Field Training, internship• Business tours and small and medium-sized business visits• Company Analysis Contest• Career Employment Festival• Certificate (Field of Major Advancement)• Career Development Grant | <ul style="list-style-type: none">• Employment Counseling• Job Search Competency Reinforcement Program- Employment Camp- NCS Problem Solving• Special Lecture on Employment- Tailored to Undergraduate (Major)• Special lecture on employment- Personality/aptitude Test• Recruitment Fair• Employment preparation class• AI Interview program• Business tours and small and medium-sized business visits• Recommended Recruitment and Field practice• Certificate (field of major advancement)• Career Development Grant | <ul style="list-style-type: none">• Job Application consulting• Interview consulting• Graduate Program• Employment essay contest• Provision of transfer/retirement consulting• Continuous management of graduates- Employment counseling using WorkNet Job Care- Utilization of the recommended employment system- Provision of employment information- Linkage with the national employment support system |
| Subjects | College Life and Career Setting | Career selection and Employment preparation | Career selection and Employment preparation | Job preparation practice | |
| | <ul style="list-style-type: none">- Connection of Special Career Lectures by Major | <ul style="list-style-type: none">- Link to Career counseling- Linkage with Non-subject Programs | <ul style="list-style-type: none">- Employment Counseling Connection- Linkage with Non-subject Programs | <ul style="list-style-type: none">- Employment Counseling Connection- Mock Interview comparison and Linkage | |
| Recommended Activities | <ul style="list-style-type: none">• Career Thinking and Exploration• Participate in Departmental Activities• Building Relationships with Seniors and Friends• Participate in Club Activities | <ul style="list-style-type: none">• Exploring the Direction of Major Advancement• Participate in Departmental Activities• Acquiring a License• Apply for Exchange Students• Participation in External and Internal Activities | <ul style="list-style-type: none">• Building major job competency• Get a Certificate• Applying for exchange students• Apply for an internship• Apply for on-the-job training | <ul style="list-style-type: none">• Acquiring Job Search skills• Support Field Practice• Apply for Corporate Internships• Participate in Employment Preparation Class | <ul style="list-style-type: none">• Apply for Employment• Receive Employment Consulting |

Special Lecture on Entrepreneurship

Support Target: On-campus Undergraduate (graduate) students Interested in Entrepreneurship

Operating period: Every Friday (1-2 times a month)

Support content: Inviting Startup Experts in each Field to Deliver Expertise

1st Semester

- Discovery of startup items for pre-entrepreneurs
- Introduction to Intellectual Property Rights/Information Search
- Entrepreneurship trends in the Untact era
- How to write a meticulous Business plan
- College student CEO Senior Entrepreneur Talks about Entrepreneurship
- Start a business using an Online Shopping mall (Smart Store)
- How to market a booming Startup

Second Semester

- Discovery of Startup Items for Pre-Entrepreneurs
- Untact, new normal era Startup Trend Strategy
- College student CEO Senior Entrepreneur Talks about Entrepreneurship
- How to market a Booming Startup
- Knowledge of Intellectual Property Rights for Idea Protection
- Start a business using an online Shopping mall (Smart Store)
- Complete Conquest of Government Support Projects to Secure Start-up Funds
- Know-how to write a meticulous Business Plan

※ The above information is subject to change depending on circumstances

Entrepreneurship Mentoring

Support Target: Entrepreneurship clubs selected in the corresponding year

Operating Period: Always

Details of Support: Advancement of Startup Items and Resolution of Difficulties through Experts in Each Field

Start-up Preparation Space (HK Dreamland)

Support Target: Entrepreneurship club or any student who is interested in Entrepreneurship

Opening hours: Weekdays: 09:00 - 18:00 (excluding weekends and holidays)

Place: HK Dreamland on the 7th floor of the Student Union Building

Support content: For Entrepreneurship and Team Project Preparation Space Support

Reservation: Space Reservation using QR code



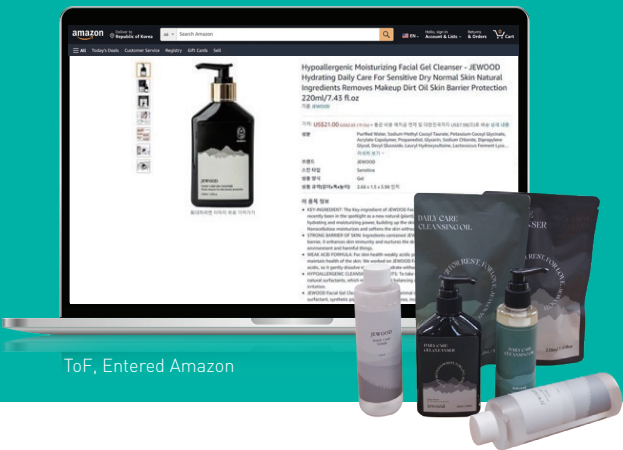
HK Dreamland



Entrepreneurship Best Practices

ToF Cosmetics

2020 New Start-up [Chemical Engineering]



ToF, Entered Amazon

- Succeeded in applying for an Overseas Trademark by Developing a Cleansing foam and JUDE (nanocellulose material) with Business Support funds, Start-up consulting, and Free start-up incubation center support from the University job center Start-up club, 2020 Korea Trade-Investment Promotion Agency (KOTRA), etc.

- With the support of 6 Organizations, Entered the Global distribution Company 'Amazon' and grew into a Leading eco-friendly convergence material technology company

- Nanocellulose, called 'Dream Natural Material', is an Eco-Friendly material Extracted from Trees, and NASA is also drawing Attention as a Space material.

- Start-up Success Story within one year of Establishment, from entering the U.S. to Domestic Social Commerce and Entering Starfield



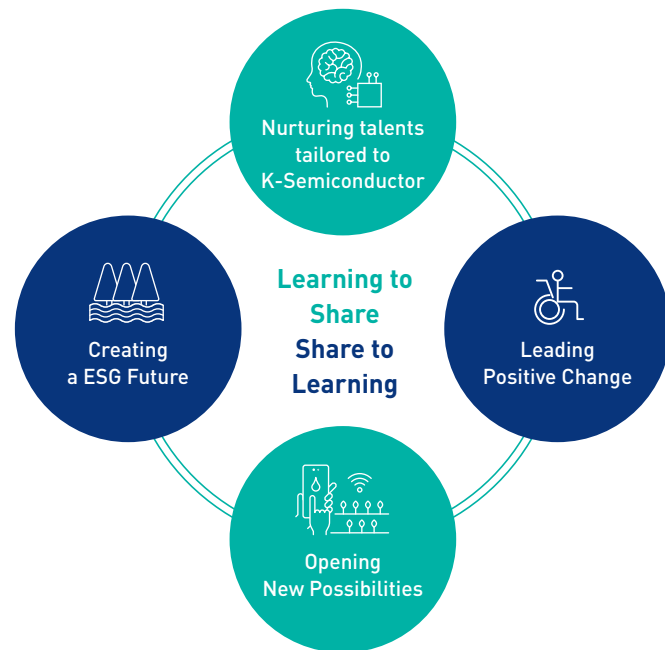
Research Center for Future Convergence Technology

COOPERATING

National University with Government policy

Contributing to the Local Community Promoted by the Government, Expansion of Higher Education Opportunities, Establishment of Specialization Strategies and Development Models

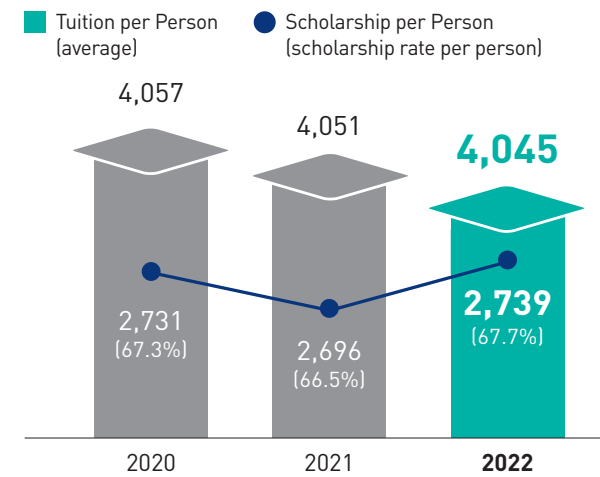
By Participating in the Vitalization of University Cooperation Networks, Contribute to National Development such as Future Agriculture, Higher Education for the Disabled, Bio, Renewable Energy, K-Semiconductor, and Wellness service



- 2023 Selected as 'Base University for Supporting Students with Disabilities' by the Ministry of Education
- 2023 Selected as 'Lifelong Learning City Operation Project for Disabled People' by the Ministry of Education
- 2023 Selected as 'SW/AI Education camp operator during vacation' hosted by the Ministry of Education
- 2023 'The 2nd National Disabled/Non-Disabled College Student Entrepreneurship Contest' sponsored by the Ministry of Education
「Dream Together Universal Design Hackathon」held

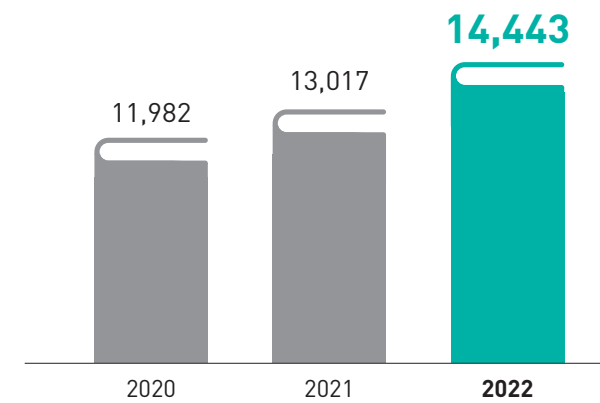
Tuition and Scholarships (per year)

(Unit: KRW 1,000)



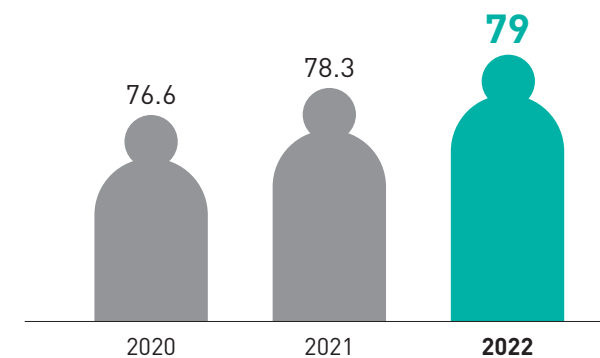
Educational Support Cost per Student

(Unit: KRW 1,000)



Rate of securing full-time faculty (based on student quota)

(Unit : %)



※ Source: University Information Disclosure



State Subsidy (facility expansion cost)

88.7 billion over 3 years
National University
Fostering Project Expenses
14.4 billion in the last 3 years
Employment and
Start-up budget support
1.27 billion over 4 years
Operating expenses for the Base University for
Supporting Students with Disabilities
1 million in 2 years
Industry-University
Cooperation Foundation contract
58.7 billion over 4 years
Artificial Intelligence Lab-Agricultural
robot platform business
7.5 billion over 4 years

INCLUSION

Control Tower of Higher Education for Students with Disabilities

Contributing to the Realization of an Advanced Welfare Society through Integrated Education for each life cycle of the Disabled and the Socially Under privileged
Support for sign language interpretation, text interpretation, braille translation and expanded data
Rental of Assistive devices and Assistive technology devices through Individual Counseling, such as Substitute materials and Test papers, Wheelchairs and Laptops
Providing a Pleasant Learning Environment for Students with Disabilities



Selected as the Best University, the Highest Score for a Supplementary Educational Institution, and Grade A in the Evaluation of Educational Welfare Support by the Ministry of Education



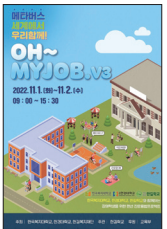
Held the First University nationwide Human Rights Eeclaration Ceremony for Students with Disabilities ('23. 4. 20. The 43rd Disabled People's Day)



The Center of Education and Research for the disabled

General function of Entrepreneurship academies for the disabled at 9 National Universities nationwide

Job search for students with disabilities, Field trips and Internships, Graduate school entrance and Employment mentoring, Certification preparation classes, Self-directed learning reinforcement, Employment linked to Major company and subsidiaries standard workplaces, Job matching at the level of disabled college students, Nationwide employment camps, Fairs, etc.



Human Rights Declaration Ceremony and Seminar for Students with Disabilities

Held 'Oh My Job' to Improve Job Confidence of disabled people



Vitalization of Universal Design

Design for All, Embracing Diverse people through design
Research on Accessible design using ergonomic technology for Fair use regardless of Gender, Age, Nationality, Cultural Background, or Disability, and Operating educational programs to Promote Real-Life Application

Improving Creativity and Realizing Ideas by using 3D printers and laser cutters, Employment and Start-up Support through Experience and Production of Necessary living tools

Outstanding Faculty members who have won Awards at the Internationally Renowned Universal Design Competition

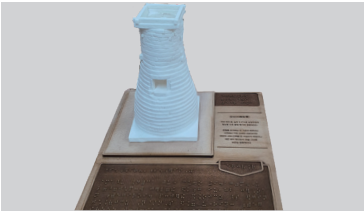
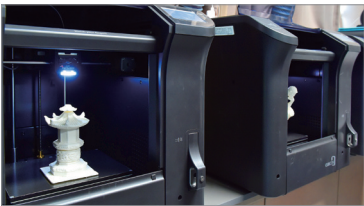
Manufactured and Provided teaching aids to 3 Schools for the Blind across the country

Selected as the Best University for 6 Consecutive years in the Evaluation of Educational Welfare Support for Students with disabilities

Best

100 Species

Best 6 times in a row



Received the Universal Design Award (Germany) 3D printer International Universal Design Silver Award



Changnong (Agricultural Start-up) Farm

SHARING

Strengthen Partnerships with Local Communities

As a national university, we will strengthen partnerships with the Region and Implementation of various Local return programs

Agricultural policy research and R&D for regional Development in Gyeonggi-do and Liberate farmers from hard labor, Help create Income in Reality and Virtual

In addition, for the Practice of carbon neutrality according to Climate Change, Contribute to the Agricultural Environment by Developing Eco-Friendly and Sustainable Agricultural Education manuals



Signed Business Agreements with more than 100 Organizations including Domestic Public Institutions, various Foundations, and Corporations



Establishment of Smart Farm, specialized training and 'Meta Farm' (combination of agriculture and metabus)

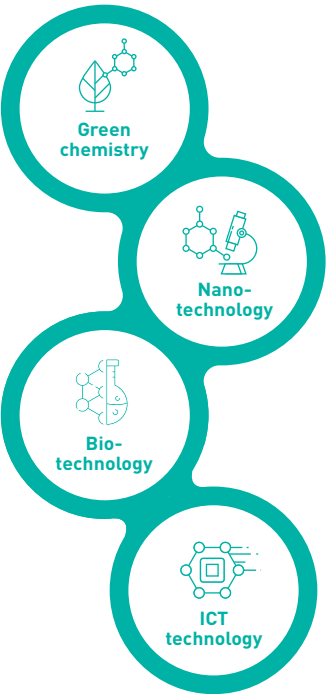


Providing an Open Agricultural Practice Space for Returnees

Vitalization of Agricultural Energy research

Development of technology for producing Renewable Energy using Organic Waste resources such as Livestock manure from Agriculture

Development of functional new materials in response to rapid changes in the Environment surrounding the chemical industry, such as High oil prices, Strengthened environmental regulations, and Increased demand for Advanced new materials



The Self-driving tractor won the '2023 Best of Innovation Awards' at 'CES (Consumer Electronics Show)', the World's Largest Electronics Exhibition held annually in Las Vegas, USA

Changnong (Agricultural Start-up) Farm



Changnong Farm Training Site



Changnong Farm Education Practice Farm view

2020 National University Development Project, selected as an excellent case of contributing to the local community in the capital and Gangwon area

Top 10 Best Practices for Government Innovation in Education in 2020

Selected as "Preliminary Start-up Farmer Changnong Farm"

Provide ONE-STOP service from Start to Finish

Giving practice-oriented mock Start-up Opportunities to Reduce uncertainty about rural settlement for return-to-farm and Start-up farmers

Farm site for Changnong Farm education

22,000 m²

Greenhouses for Educational practice

Operation of 30

Healing Agriculture

2022 Selected as an Excellent case of Government Innovation in the Field of Education and won the Grand prize "Community Cooperation through Healing Agriculture"

Providing a space of Healing and Cure that goes beyond food production, Delivering Nature's Rest and Comfort to all those who are Physically and Mentally Exhausted

SimSimHan (心審閑: mind, care, leisure)Town Post Traumatic Stress Disability (PTSD) Recovery Program for Firefighters and Police Officers with Care Farming



Healing Agriculture Program

CREATING

Creator Space

For nurturing Convergence-type talent equipped with Integrative Thinking ability based on Creativity, Creator Space, built as a space for Producing High-quality Lecture contents, Consists of XR/AR/VR Studio



2022 school year Learning Management System (LMS) regular curriculum opened

2,853 Courses

2022 school year Opening of non-regular courses

150 Courses

Last 5 semesters

81 Subjects Opened

5,836 Courses Taken



ACHIEVING

Education for all

Achieving the Value of Community

ODA Support Project

32 Cases in 20 Countries

ODA Orders Received for 3 Years

9.1 Billion

Building a University-Regional Education Community

Opening of various Educational courses considering the Needs of the Local Community in the rapidly changing era of Life Expectancy Extension, Lifelong Education by life cycle that Inspires the will to Learn continuously and Allows anyone to grow continuously, and Operating various Certificate programs for Middle, High school, and College students

Lifelong Education Center for the Disabled

Contribute to Improving the sense of Achievement and Quality of Life of the Disabled by Opening educational courses by Life Cycle and disability type using University Infrastructure and Providing support programs for related organizations to Expand social participation and Lifelong education Opportunities for the disabled

ODA* Business

In order to practice Global Community Values and Improve the Quality of Life in Developing countries, We started a project in the Field of Education in Egypt from 2009, Until the Establishment of the Industry-University Linked Livestock Technology Support Center at the University of Life Sciences in Mongolia / Promoted 32 Support projects in 20 Countries 9.1 Billion won in 3 Years

* Official Development Assistance



Anseong Campus

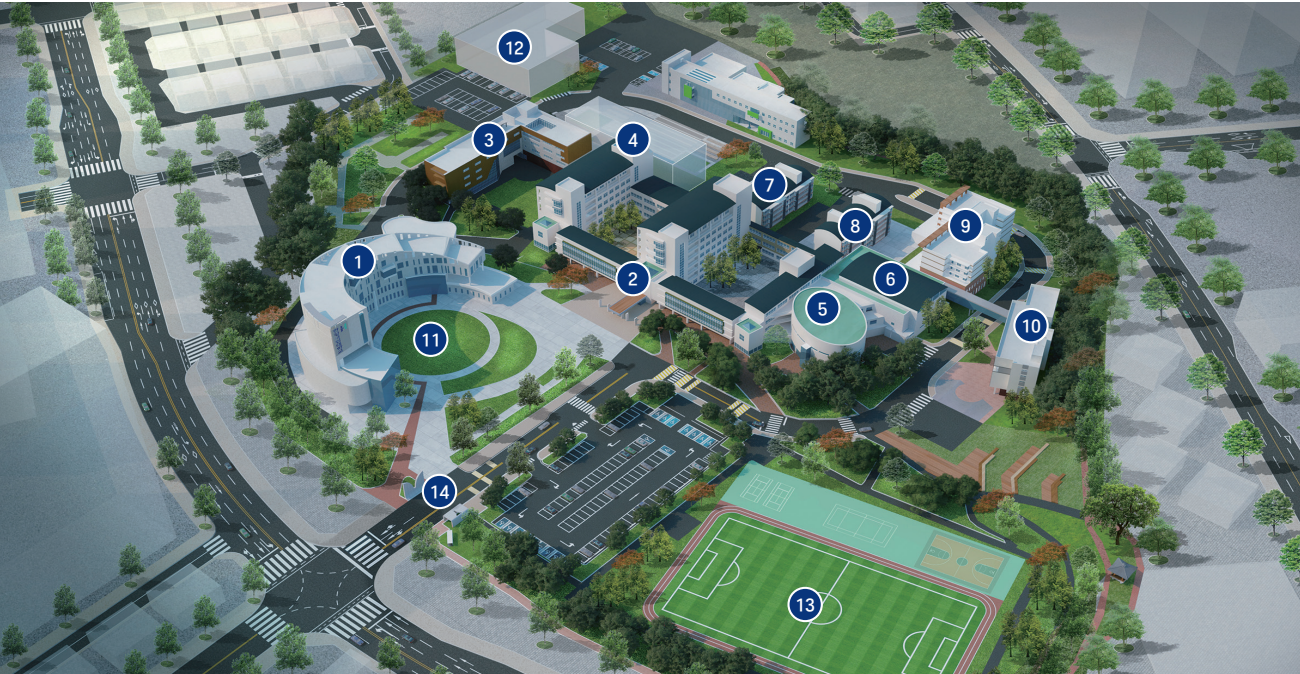


- | | | |
|--------------------------------|--|--|
| 1 University Headquarters | 9 Changjo Dormitory | 17 Gymnasium |
| 2 Agriculture Bldg 2 | 10 Hoyeon Dormitory | 18 Local Culture Center |
| 3 Engineering Bldg 2 | 11 Agriculture Bldg 1 | 19 Natural Science Bldg |
| 4 Engineering Bldg 1 | 12 Narea Dormitory | 20 Research Center for Future Convergence Technology |
| 5 Multipurpose Laboratory Bldg | 13 Student Union Bldg | 21 Academic Industry Cooperation Bldg |
| 6 Engineering Bldg 3 | 14 Backhoe Square (Brand Exhibition Hall, Book Cafe) | 22 Sports Ground |
| 7 Bibong Dormitory | 15 Library | 23 Main Entrance |
| 8 Agriculture Bldg 3 | 16 Humanities and Social Science Bldg | |

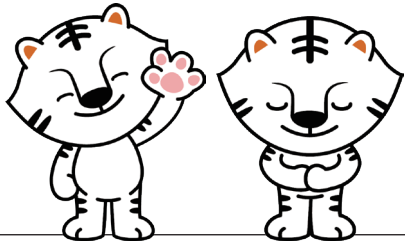
Directions

- Private car** Gyeongbu Expressway - Pyeongtaek Jecheon Expressway - Namansung IC - Toward Anseong(turn left) - Hankyong National Universit Anseong Campus
- Jungbu Expressway Iljuk IC - Anseong direction (right turn) - Left turn right after Bibong Tunnel - Hankyong National University Anseong Campus
- Bus** **Direct** Gangnam Express, Nambu, Dong Seoul, Seongnam, Suwon (To Anseong) - Hankyong National University (6:00-09:00, 11:00-13:00, 17:30-20:00)
- Stop over** Gangnam Express, Nambu, Dong Seoul, Seongnam, Suwon (To Anseong) – Get off at Chung-Ang University – Take city bus to Anseong - Hankyong National University
- School bus** The school bus schedule is released on the website every semester

Pyeongtaek Campus



- | | | |
|-------------------|--------------------|---------------------------|
| 1 Future Bldg | 6 Gymnasium | 11 Hanul Square |
| 2 Humanities Bldg | 7 Haesol Dormitory | 12 Golf Practice Facility |
| 3 Creative Bldg | 8 Narae Dormitory | 13 Sports Ground |
| 4 Practice Bldg | 9 Raon Dormitory | 14 Main Entrance |
| 5 Auditorium | 10 Nuri Dormitory | |



Directions

- Private car** Gyeongbu Expressway - Seoanseong JC - Seo Pyeongtaek - Songtan IC- Toward Songtan(turn left)- Hankyong National University Pyeongtaek Campus
- Bus** - Hankyong National University Pyeongtaek Campus **6-1, 15, 16-1, 77**
- Hankyong National University Pyeongtaek Campus Main Gate, Gyeonggi Provincial Senior Citizens' Specialized Pyeongtaek Hospital No. **7-5, 7-6, 660**
- Doil Intersection (10-minute walk) **7-3, 7-4, 7-7**
- School bus** The school bus schedule is released on the website every semester